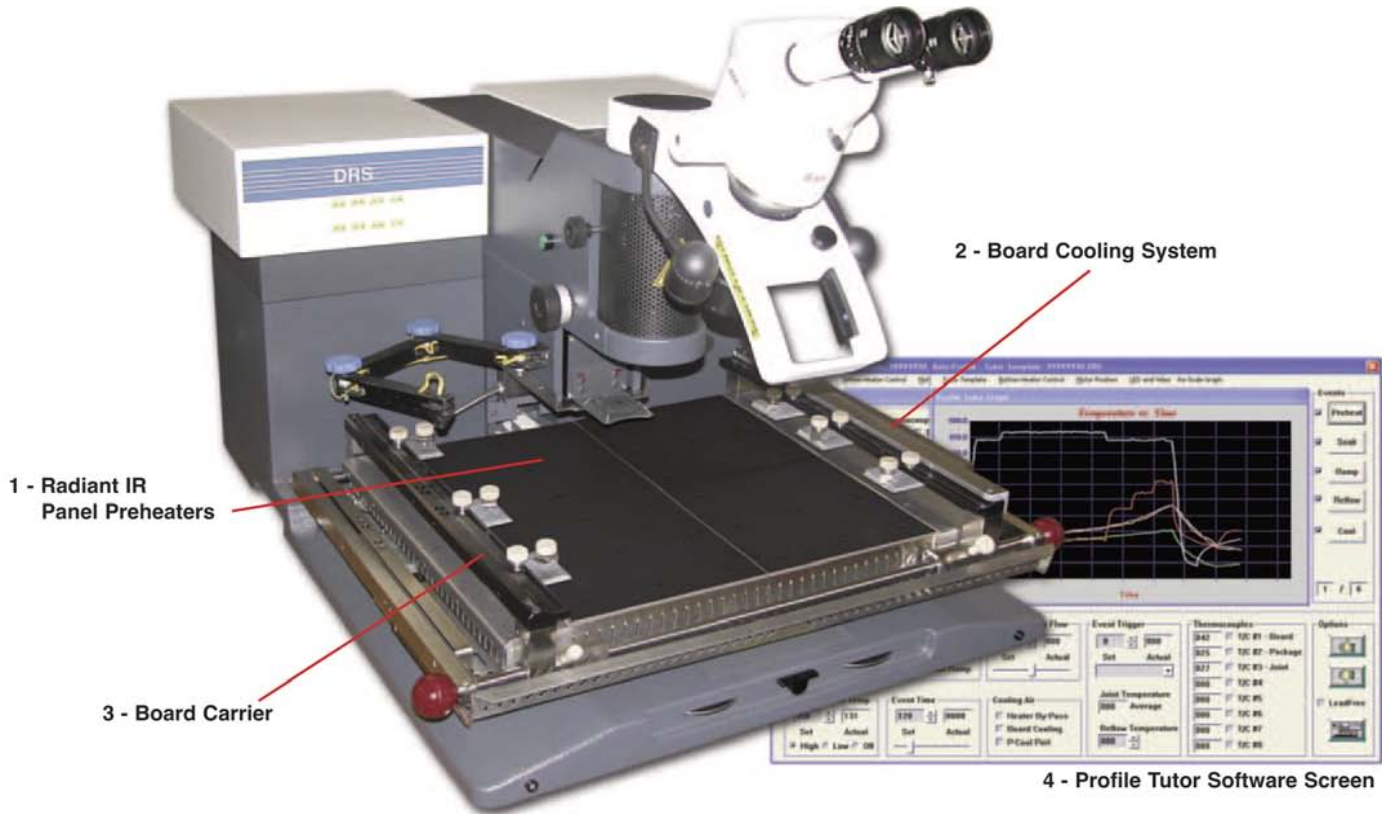




Upgrade Your DRS24 to a Lead-Free Capable DRS25

Convert your DRS24C or DRS24NC to our current DRS25 models by integrating new technology, new components, new electrical and new mechanical systems. Your base casting, z-axis/nozzle heater assembly, vision system and x-y table will be used - *everything else is new!*



Major Feature Upgrades

1 - Radiant IR Panel Preheaters

- Large, powerful radiant IR panel preheater provides the capability to preheat any assembly to higher temperatures required for effective lead-free rework.
- High thermal uniformity based on proprietary design.

2 - Board Cooling System

- Rapid cooldown of the component and assembly.
- Ability to control time over reflow.
- Promotes operator safety. Comfortable board handling and reduced machine preheater surface temperatures.

3 - Board Carrier

- Enhanced design provides increased stability and greater flexibility for various assemblies.
- Expanded board holding capability.
- Insulated knobs for increased operator safety.

4 - Profile Tutor Software

- Provides fast and easy, first run, automatic thermal profile of any device with on-the-fly capability. Simply set the target temperatures and go.
- After the thermal profile is complete, the entire rework process (removal, site cleaning and replacement) is built automatically and ready to run immediately.

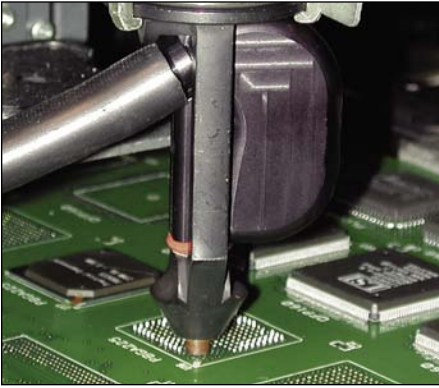
5 - WAGO Controls

- The new control system offers an intelligent, compact distributed control network with the capability and flexibility to offer customized configurations.

6 - Additional Upgrades (DRS24C ONLY)

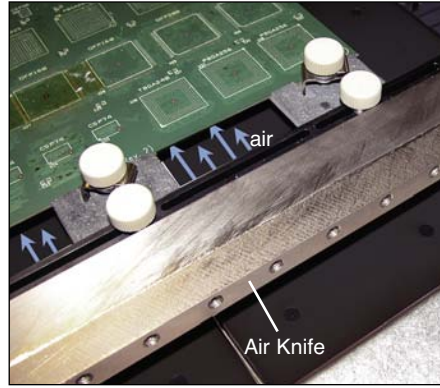
- External PC with 19" Flat Screen Monitor
- Green/White adjustable Vision Lighting
- Outriggers for stable board carrier/preheater
- New Z-Axis and Vision Motors
- New Force Measurement Control
- Site Cleaning Filtering System

KEY ADVANTAGES



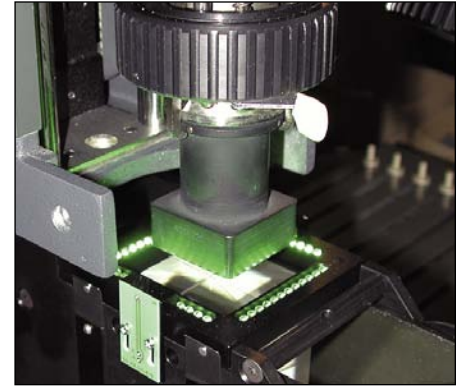
Site Solder Removal System

Safely removes residual solder from the pads. The composite tip protects the pads, traces and fragile solder mask.



Board Cooling System (Air-Knife)

Provides programmable cooldown of the solder joints and board.



Colored LED Lighting

Simplifies alignment with green and white LED lighting. Improved contrast adjustment between the component spheres and the board pads is provided.

OPTIONS

Pivoting IR Probe with Pointer #1012.02.017

IR Probe Sensor allows for precise measurement of board temperature.

High Capacity Site Solder Removal System #1015.00.014

Safely removes residual solder from BGA pads.

Universal Insertion Tool #AU9LGA56SQ

Promotes quick and accurate device orientation to the nozzle.

Ergonomic Workstation with CPU Holder #1003.05.010

60"W x 36"D ultra-sturdy construction with built-in outlet strip. Other workstation options include Monitor Stand 1003.05.005, Nozzle Stand 1003.05.006 and Locking Drawer 1003.05.007.

Direct View Camera with 20" Video Monitor #0025.03.010

High resolution color camera with zoom lens.

Video Inspection System with 15" Monitor #1025.00.010

Hand held video inspection for printed circuit boards.

Paste-On-Device Stencil Adapter #0024.24.111

Thermocouple Organizer (holds 4 TC's) #0024.90.047
Hand held video inspection for printed circuit boards.

Fume Extraction Manifold & Hose Assembly #1020.01.040

Requires connection to central exhaust system or dedicated air purification power unit.

DRS25 MODEL CONFIGURATIONS/DATA

• Model	<u>DRS25</u>	<u>DRS25XL</u>	<u>DRS25T</u>	<u>DRS25XLT</u>
• Description	Standard machine	Extra large boards	Extra topside clearance	XL boards & extra topside clearance
• Preheater				
- size	16" x 16"	24" x 16"	16" x 16"	24" x 16"
- zones	2	3	2	3
- watts	5000	7500	5000	7500
• Board Size	18" x 24"	24" x 24"	18" x 24"	24" x 24"
• Clearance				
- topside	1.0"	1.0"	2.3"	2.3"
- bottom	1.0"	1.0"	.97"	.97"
• Placement accuracy:	+/- 25 microns @ 3 sigma			
• Repeatability:	7 microns (machine to machine)			
• Viewing angle:	45°-60°			
• Theta rotation:	+/- 10°			
• Air/nitrogen:	80-130 psi @ 3 scfm			
• Maximum temperature:	450°C (upper heater); 375°C (bottom heater)			
• Power requirement:	CONTACT AIR-VAC			
• Std. component size:	2"sq/6" (vision/reflow)			
• Machine Operating dimensions:	60W" x 40D" x 36H"			
• Weight:	275 lbs.			



Custom Workstation



AIR-VAC ENGINEERING
www.air-vac-eng.com

30 PROGRESS AVE • SEYMOUR, CT 06483 • 203-888-9900

2131 LAS PALMAS DRIVE, SUITE D • CARLSBAD, CA 92009 • 760-438-9363